

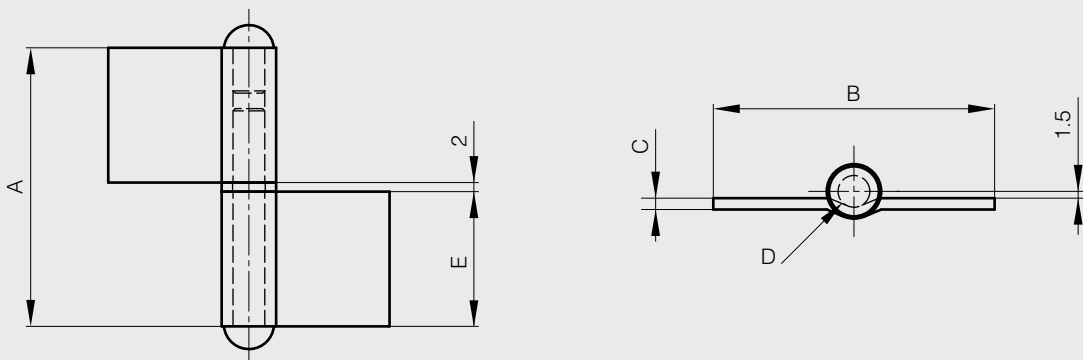


# Hinges / Various hinges

## Flag hinge with washer

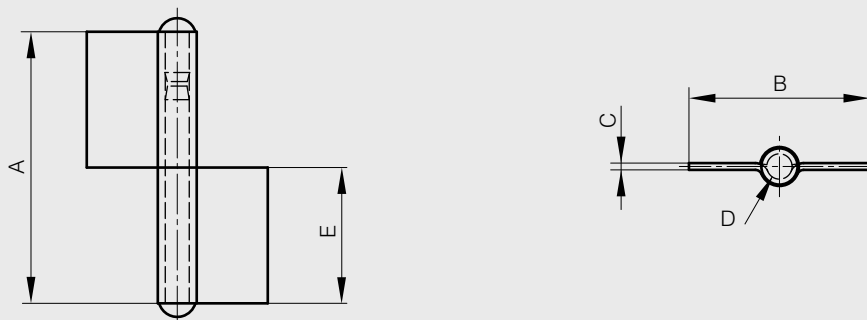
Flag hinge with brass washer

A	B	C	D	E	note	part number	material	finish	weight
62	62	2.5	7	30	type 2 as shown below	12-1-3634	steel	raw	87g
62	62	2.5	7	30	type 1 symmetric not shown	12-1-3635	steel	raw	87g



## Flag hinge without washer

A	B	C	D	E	part number	material	finish	weight
60	40	1.5	5.3	30	12-1-3303	steel	raw	38g
80	40	1.5	5.3	40	12-1-3849	steel	raw	51g
80	50	2	6	40	12-1-3304	steel	raw	74g
60	40	1.5	5.3	30	12-1-3769	304 stainless steel	raw	38g
80	50	2	6	40	12-1-3370	304 stainless steel	raw	74g

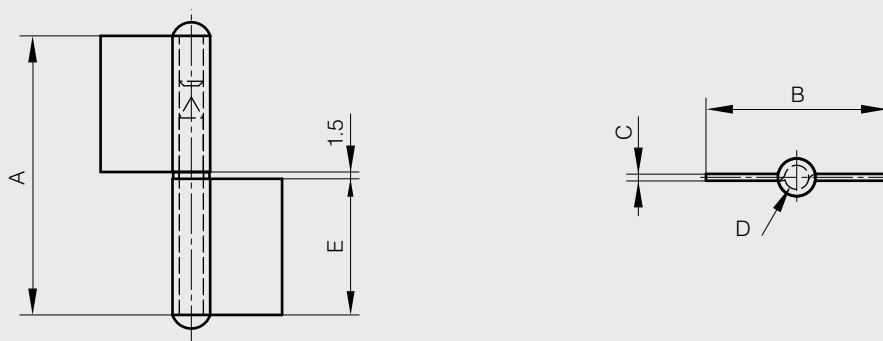




## Flag hinge with washer

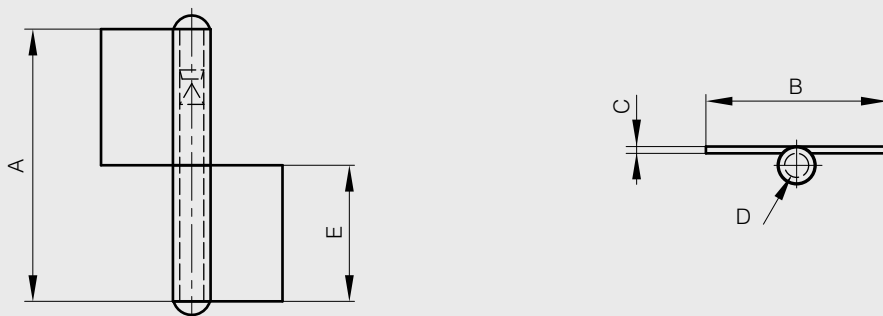
Flag hinge with brass washer, included separately

A	B	C	D	E	part number	material	finish	weight
61.5	40	1.5	5.3	30	12-1-3305	steel	raw	39g
81.5	50	2	6	40	12-1-3306	steel	raw	75g
61.5	40	1.5	5.3	30	12-1-3771	304 stainless steel	raw	39g
81.5	50	2	6	40	12-1-3772	304 stainless steel	raw	75g



## Flag hinge without washer

A	B	C	D	E	note	part number	material	finish	weight
60	40	1.5	5.3	30	type 2 as shown below	12-1-3307	steel	raw	39g
60	40	1.5	5.3	30	type 1 symmetric not shown	12-1-3308	steel	raw	39g
80	48	2	6	40	type 2 as shown below	12-1-3309	steel	raw	76g
80	48	2	6	40	type 1 symmetric not shown	12-1-3310	steel	raw	76g



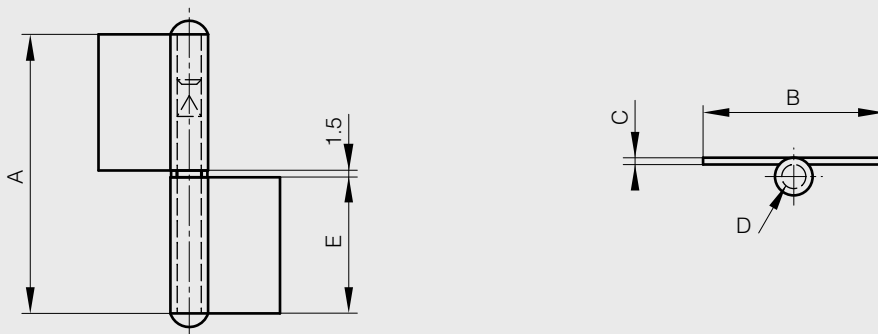


# Hinges / Various hinges

## Flag hinge with washer

Flag hinge with brass washer, included separately

A	B	C	D	E	note	part number	material	finish	weight
61.5	40	1.5	5.3	30	type 2 as shown below	12-1-3311	steel	raw	40g
61.5	40	1.5	5.3	30	type 1 symmetric not shown	12-1-3312	steel	raw	40g
81.5	48	2	6	40	type 2 as shown below	12-1-3313	steel	raw	77g
81.5	48	2	6	40	type 1 symmetric not shown	12-1-3314	steel	raw	77g



## Flag hinge without washer

A	B	C	D	E	note	part number	material	finish	weight
82	47	2	6	41	type 2 as shown below	12-1-3315	steel	raw	77g
82	47	2	6	41	type 1 symmetric not shown	12-1-3316	steel	raw	77g

