

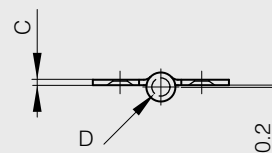
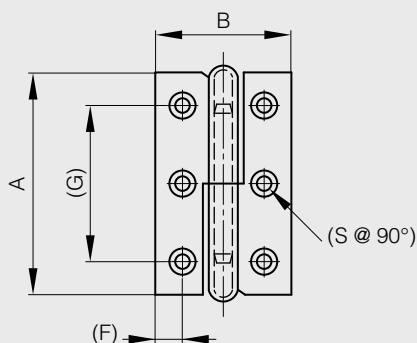


Hinges / Various hinges

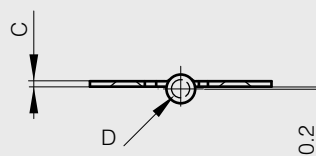
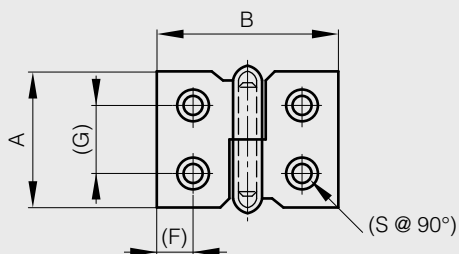
Lift-off hinges

Drilled or undrilled versions

A	B	C	D	F	G	S	note	part number	material	finish	weight
50	30	1.2	4				type 1 symmetric not shown / undrilled	14-7-3378	steel	raw	21g
50	30	1.2	4				type 2 as shown below / undrilled	14-7-3379	steel	raw	21g
60	40	1.5	4				type 1 symmetric not shown / undrilled	14-7-3380	steel	raw	36g
60	40	1.5	4				type 2 as shown below / undrilled	14-7-3381	steel	raw	36g
50	30	1.2	4	6	34	2.5	type 1 symmetric not shown / drilled	14-7-3394	steel	nickel plated	20g
50	30	1.2	4	6	34	2.5	type 2 as shown below / drilled	14-7-3395	steel	nickel plated	20g



A	B	C	D	F	G	S	note	part number	material	finish	weight
30	40	1.2	4	7.7	15	3	type 1 symmetric not shown	14-7-3390	steel	nickel plated	16g
30	40	1.2	4	7.7	15	3	type 2 as shown below	14-7-3391	steel	nickel plated	16g

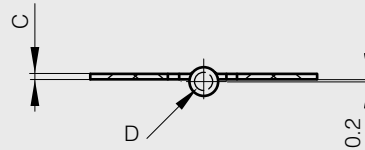
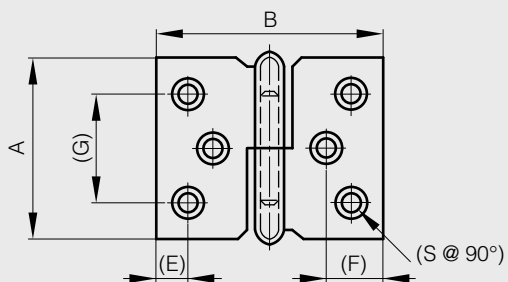




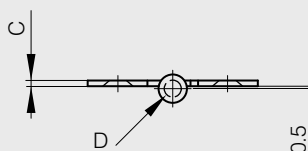
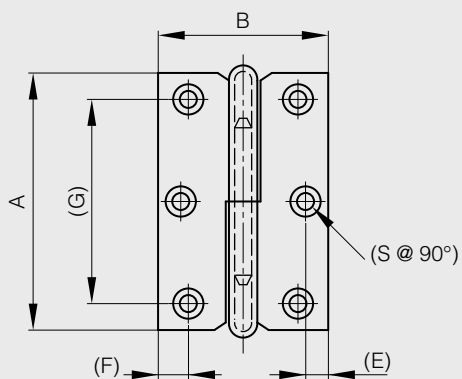
Hinges / Various hinges

Lift-off hinges

A	B	C	D	E	F	G	S	note	part number	material	finish	weight
40	50	1.5	4	7.5	13	24	3	type 1 symmetric not shown	14-7-3392	steel	nickel plated	28g
40	50	1.5	4	7.5	13	24	3	type 2 as shown below	14-7-3393	steel	nickel plated	28g



A	B	C	D	E	F	G	S	note	part number	material	finish	weight
60	40	1.5	4	5.5	7	46	3	type 1 symmetric not shown	14-7-3396	steel	nickel plated	35g
60	40	1.5	4	5.5	7	46	3	type 2 as shown below	14-7-3397	steel	nickel plated	35g
70	45	1.5	4.5	5.7	7.5	54	4	type 1 symmetric not shown	14-7-3398	steel	nickel plated	46g
70	45	1.5	4.5	5.7	7.5	54	4	type 2 as shown below	14-7-3399	steel	nickel plated	46g
80	50	1.5	5	7.2	9.2	62	4	type 1 symmetric not shown	14-7-3400	steel	nickel plated	59g
80	50	1.5	5	7.2	9.2	62	4	type 2 as shown below	14-7-3401	steel	nickel plated	59g





Hinges / Various hinges

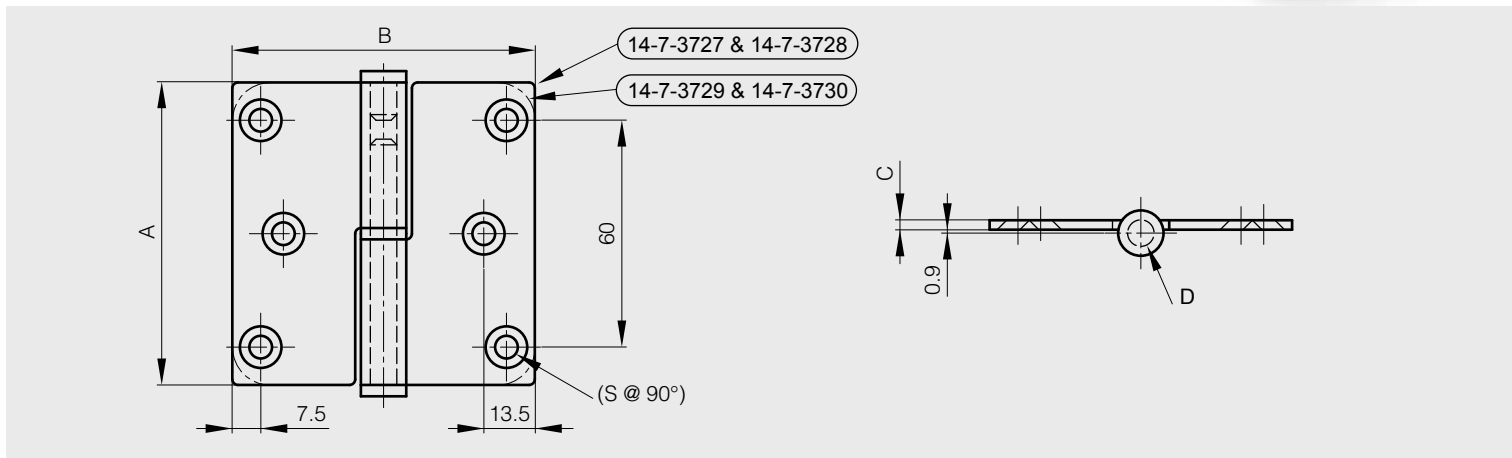
Lift-off hinges 80 x 80 stainless steel with 6 holes

2 shapes available :

- shape with square ends (14-7-3727 and 14-7-3728)
- shape with round ends (14-7-3729 and 14-7-3730)

Only the visible side has a brushed finish

A	B	C	D	S	note	part number	material	finish	weight
80	80	2.5	7	5.2	type 1 symmetric not shown / square corners	14-7-3727	304 stainless steel	brushed	175g
80	80	2.5	7	5.2	type 2 as shown below / square corners	14-7-3728	304 stainless steel	brushed	175g
80	80	2.5	7	5.2	type 1 symmetric not shown / round corners	14-7-3729	304 stainless steel	brushed	175g
80	80	2.5	7	5.2	type 2 as shown below / round corners	14-7-3730	304 stainless steel	brushed	175g



Lift-off hinges 100 x 100 stainless steel 8 holes

2 shapes available :

- shape with square ends (14-7-3675 and 14-7-3679)
- shape with round ends (14-7-3677 and 14-7-3681)

Only the visible side has a brushed finish

A	B	C	D	S	note	part number	material	finish	weight
100	82	2.5	7	4.7	type 1 symmetric not shown / square corners	14-7-3675	304 stainless steel	brushed	220g
100	82	2.5	7	4.7	type 1 symmetric not shown / round corners	14-7-3677	304 stainless steel	brushed	220g
100	82	2.5	7	4.7	type 2 as shown below / square corners	14-7-3679	304 stainless steel	brushed	220g
100	82	2.5	7	4.7	type 2 as shown below / round corners	14-7-3681	304 stainless steel	brushed	220g

