

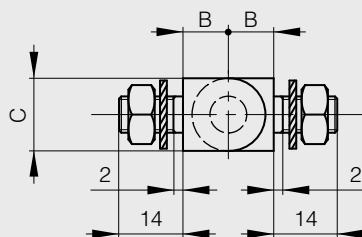
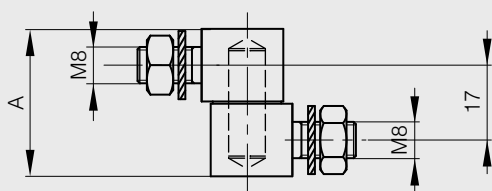


Hinges / Various hinges

Bolt-on hinges in 2 parts

With solid brass pin and zinc plated brass washers

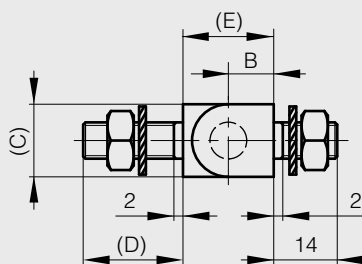
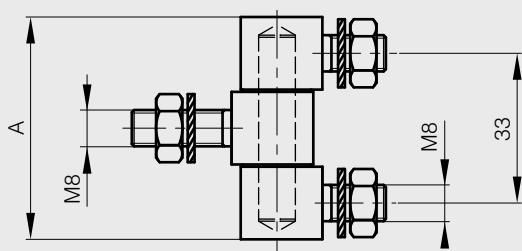
A	B	C	part number	material	finish	weight
33	10	16	72-1-3858	steel	zinc plated	87g



Bolt-on hinges in 3 parts

With solid brass pin and zinc plated brass washers

A	B	C	D	E	part number	material	finish	weight
49	10	16	22	20	72-1-3733	steel	zinc plated	130g
49	10	16	14	22.5	72-1-3857	steel	zinc plated	130g





Bolt-on hinges in 3 parts

With washers and M6 bolts

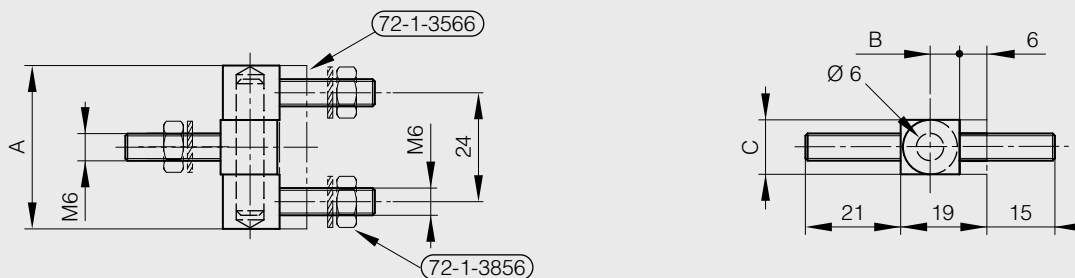
A	B	C	part number	material	finish	weight
36	6.5	12	72-1-3856	steel	raw	70g



Bolt-on hinges in 3 parts with plate

No washers and no bolts

A	B	C	part number	material	finish	weight
36	6.5	12	72-1-3566	steel	raw	63g



Pin hinge for flush doors

For M5 screw

A	B	C	part number	material	finish	weight
63.5	17.5	15.1	72-7-4168	zinc die-cast	black	80g

