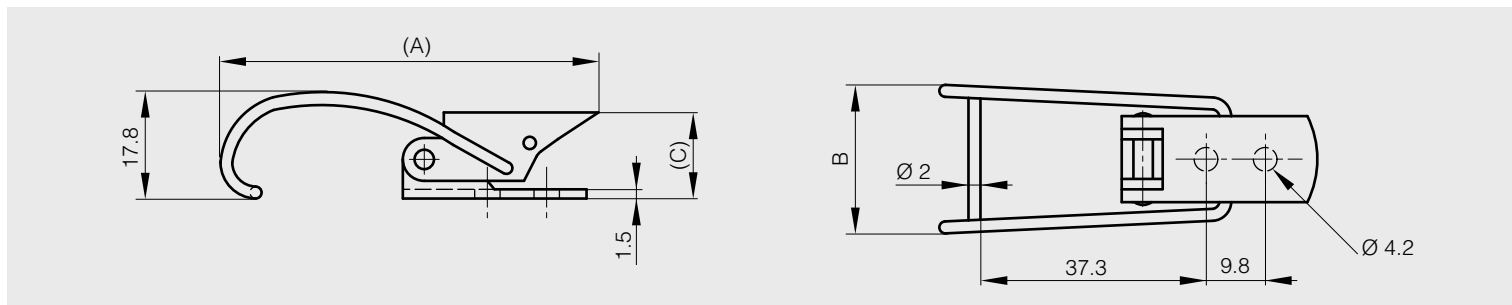


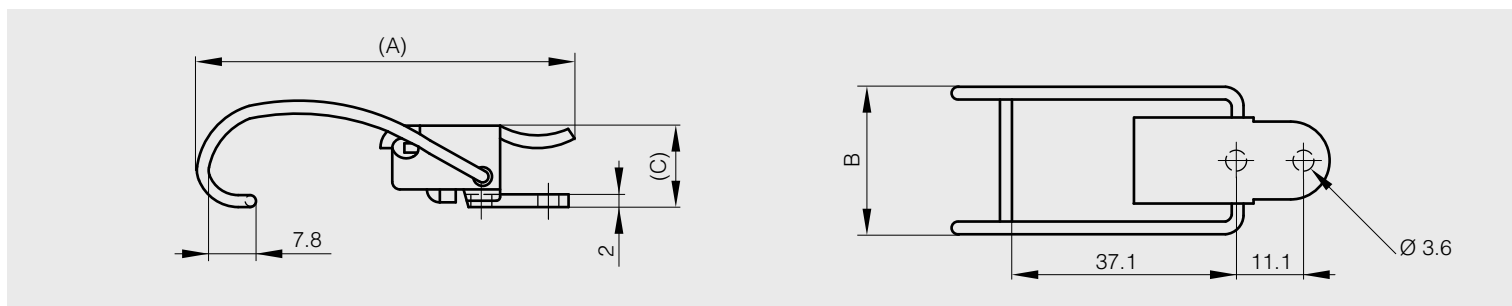


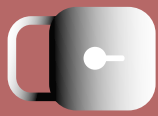
Toggle latches without strike

A	B	C	part number	material	finish	weight
62.5	24.6	14.2	16-7-3897	304 stainless steel	raw	27g



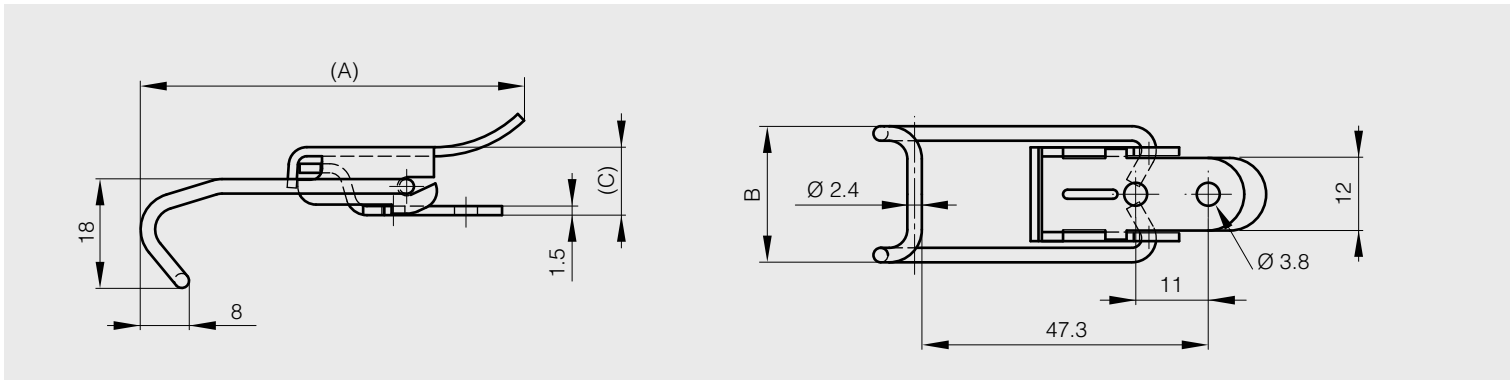
A	B	C	part number	material	finish	weight
62.5	24.4	13.5	16-7-3900	304 stainless steel	raw	27g



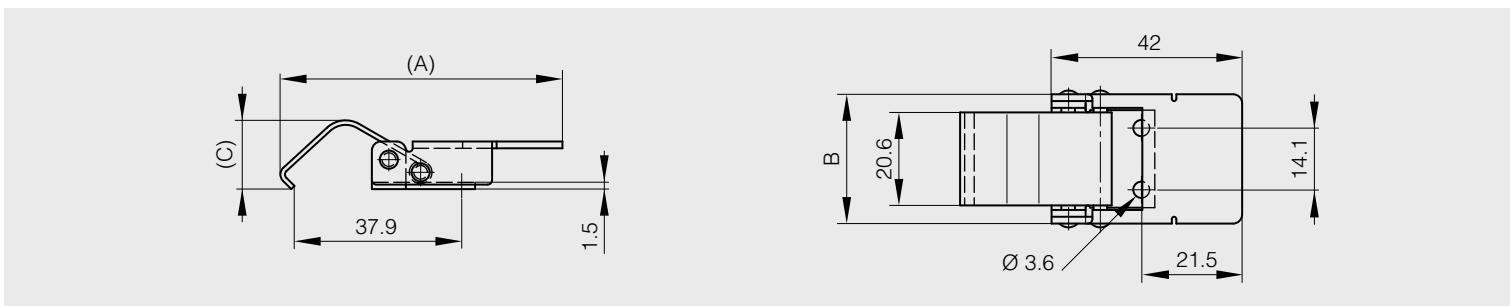


Toggle latches without strike

A	B	C	part number	material	finish	weight
63.6	22.5	11.8	16-7-3767	steel	black cataphoresis	20g



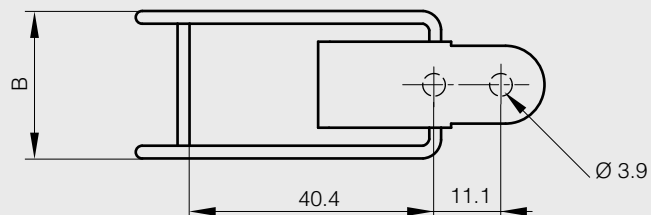
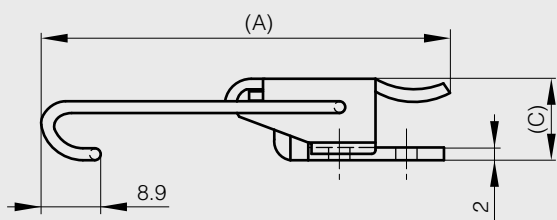
A	B	C	part number	material	finish	weight
64	28.7	14	16-7-3947	steel	zinc plated	45g
64	28.7	14	16-7-3948	stainless steel	raw	45g



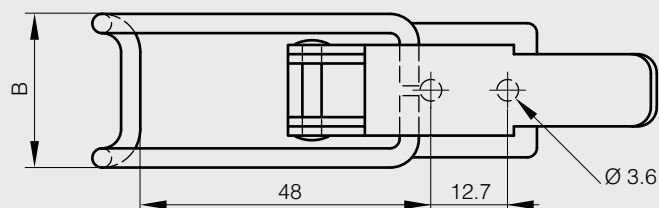
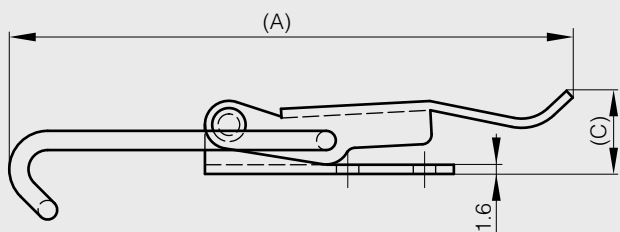


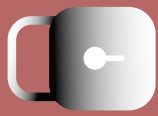
Toggle latches without strike

A	B	C	part number	material	finish	weight
67.6	25.4	13.7	16-7-3901	steel	zinc plated	32g
67.6	25.4	13.7	16-7-3902	304 stainless steel	raw	32g



A	B	C	part number	material	finish	weight
93.2	25.4	13.7	16-7-3903	304 stainless steel	raw	32g





Toggle latch without strike

A	B	C	part number	material	finish	weight
106	47	19.5	16-7-3768	steel	black cataphoresis	42g

