

## Lift-off rising butt hinge for swimming pool & commercial furniture

A new lift-off rising butt hinge intended for manufacturers producing lockers and cubicles in laminate or melamine board.

### Main features:

- A **ramp** allows gravity automatic closing
- **RH** and **LH** versions
- Good corrosion **resistance** (zinc die-cast and SS pin)
- **Satin chrome** finish
- Total swing of **180°**
- **Door removal** with no tool

### Application examples:

- swimming pool lockers/cubicles
  - schools
  - hotels
  - camp sites
  - health clubs
- Etc.

### Material:

zinc die-cast, satin chrome finish  
pin: stainless steel  
ramp: PA (polyamide)

### Part numbers:

**14-1-3797** RH

**14-1-3798** LH

**Other hinges for swimming pool & commercial furniture:** see our catalogue.

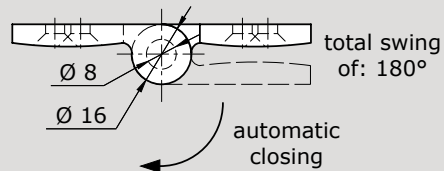
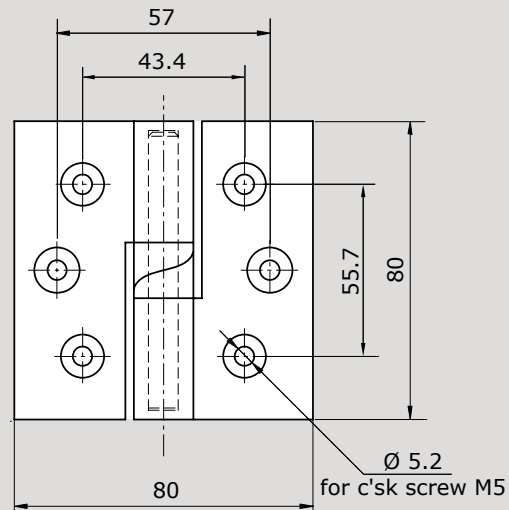


Lift-off rising butt hinge RH 14-1-3797



Lift-off rising butt hinge LH 14-1-3798

**Lift-off rising butt hinge**  
for swimming pool & commercial furniture



Scale: 1/2

Lift-off rising butt hinge RH (dimensions)

*Subject to technical changes*

**Pinet Industrie** • 9, rue de l'Etang • Parc international d'activités Paris Nord 2  
BP 62036 • 95971 Roissy Charles de Gaulle Cedex • France  
Tél. : 33 (0)1 49 38 27 00 • Fax : 33 (0)1 48 63 77 70 • [www.pinet.tm.fr](http://www.pinet.tm.fr)

SAS au capital de 4 118 400 € • RCS Bobigny et SIRET • B 407 485 556 00010 • Code NAF : 286 F